



eating
made
easy



LIVE OFF-CAMPUS?

Dine

ON-CAMPUS

Make the most of your experience with a
commuter meal plan this semester!

- ⇒ *No cooking or cleaning*
- ⇒ *Save your parking spot*
- ⇒ *Stay fueled on-the-go*



@SPUHOSPITALITY



Saint Peter's
UNIVERSITY

Hospitality

COMMUTER MEAL PLAN GUIDE

2024-2025

www.spu.campusdish.com

Dining Services on Campus

Some of the best memories come from eating at a table with friends.

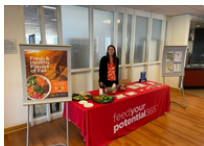
Have the true college experience with a meal plan!

Check out below to learn more about what dining services brings to students and staff daily.



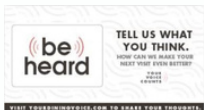
Dining Calendars

Full of fun events to enjoy with your friends on campus.



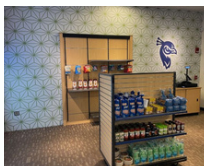
9 Station Options

Our culinary team puts together menus that are guaranteed to satisfy! Make sure to try all our stations at Loughran Dining Hall.



We Listen

Your feedback throughout the semester helps implement changes to make your experience better!



Retail Locations

In addition to our all-you-can-eat dining hall, students also have retail locations like the campus store, Starbucks, and the Nest to shop around with their munch money!

Meal Plan is the Deal Plan



Take advantage of all the great dining experiences on campus by signing up for a meal plan today.

Scan our QR code to learn more!

COMMUTER MEAL PLAN OPTIONS



Block 10

**10 Meals Per Semester
\$90**

**As low as \$9.00
per meal!**

Door Rates for Loughran Dining Hall

Breakfast – \$7.50

Lunch – \$10.25

Dinner – \$12.95

A Block 10 Plan lets you have lunch with your friends 10 times throughout a semester for only \$9.00 a meal!

Don't miss out on the college dining experience!

Block 10 Basic

**10 Meals Per Semester
Munch Money: \$50
\$125**

**As low as \$7.50
per meal!**

Block 10 Ultimate

**10 Meals Per Semester
Munch Money: \$100
\$185**

**The most
Munch Money!**

Commuter Convenience 25 Block

**25 Meals Per Semester
Munch Money: \$50
\$225**

**As low as \$7.00
per meal!**

***Pricing Based on Current Academic Year**

Meals are redeemed at Loughran Dining Hall, our on campus all-you-care-to-eat dining location.

Munch money is usable at all dining locations on campus.

**For more information please contact us at:
kazemba-austin@aramark.com OR (201)761-7380**

spu.campusdish.com

Saint Peter's University Hospitality

HOW TO SIGN UP FOR A MEAL PLAN

Campus Dish

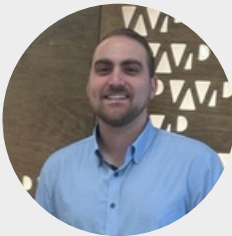
Our Saint Peter's University Hospitality website, **Campus Dish**, has more information on commuter meal plans and what they have to offer. If you are seeking more information, please scan our QR code and check out the website today!



Meal Plan Specialist

If you have any questions or concerns about meal plans, please feel free to email Austin Kazemba our Marketing Manager! He will assist you and help guide you towards the right meal plan for you.

Kazemba-Austin@aramark.com



Step 1: Choose the Right Plan

Students have different options for meal plans to help ensure they select the right option to fit their needs. Check out our [website](#) for a further breakdown of all the options available!

Step 2: Complete Our Sign-Up Sheet

Once students have selected the meal plan that fits their needs, they will need to complete our sign-up sheet. Scan the QR code below!



Step 3: Processing Payment

Students can choose to add a meal plan to their account or pay with cash, credit/debit, or check. Please give our team (2) business days to follow up, confirm payment, and add the meal plan to your account!